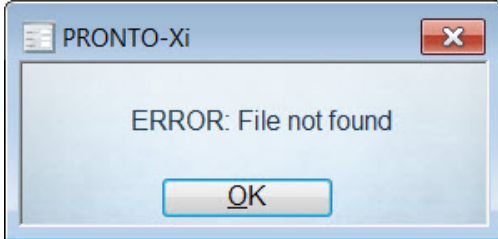


How to check the version of the proledb upload program

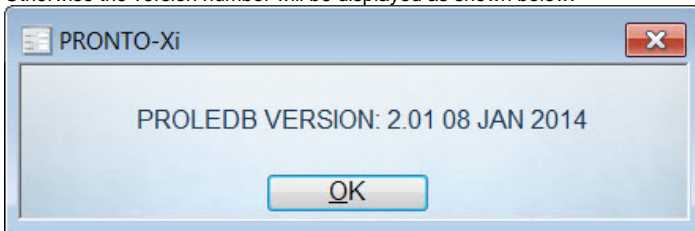
Customer Self Service uses a program called 'proledb' to import orders and receipts.

To check the currently installed version of proledb:

1. In your ERP, use F3 and then Command.
2. Type in: `prospl proledb -version`
3. If you get the message below, then you're on version that precedes 2.01 (the version-checking facility was created in 2.01):



4. Otherwise the version number will be displayed as shown below:



Related articles

- [MS Active Directory Setup Guide](#)
- [Settings and Functions Available in the PRONTO Order and Receipt Import Program](#)
- [User Debtor Integration](#)
- [Azure Integration Dashboard](#)
- [Set Up User Creation API](#)